



The AOWS-1250 Condensate Separator uses three stages of treatment to separate difficult condensate. With two specially treated polypropylene elements and a carbon polisher, you can count on reliable and cost effective condensate separation performance regardless of the type of lubricant* or drains you use.

This model is loaded with useful features, like a visual element life indicator that lets you know when your elements need to be replaced, and an overflow indicator to avoid messy spills.

Take the guesswork out of condensate treatment and upgrade to the AOWS Condensate Separator.

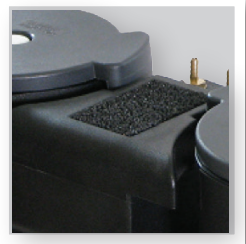
** Contact us for sizing assistance with PAG lubricant applications.*

FEATURES	BENEFITS
No settling chamber or storage tank required	Eliminates health & safety concerns. Performance is not affected by movement.
Can separate any type of lubricant	Including modern synthetic lubricants* or even emulsified mixtures.
Can be used with any type of drain	Including all Aircel condensate drains.
Brass threaded inserts & adapters	For secure inlet and outlet piping or tubing connections.
Foam mesh depressurization chamber with foam exhaust filter	Slows incoming condensate and cleanly discharges compressed air.
Visual element life indicator	Provides confident indication of element condition.
Overflow warning indicator	Avoids spills in the event of a blockage.
Three stages of treatment	Two polypropylene elements and a carbon polisher for optimum performance.
Multiple lightweight media bags	Comply with OSHA lifting requirements.
Rugged polyethylene housing	Strong and corrosion proof construction.

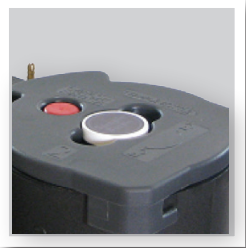
SIMPLE EFFECTIVE CONDENSATE TREATMENT

AOWS-1250

Technical Specifications



Depressurization chamber



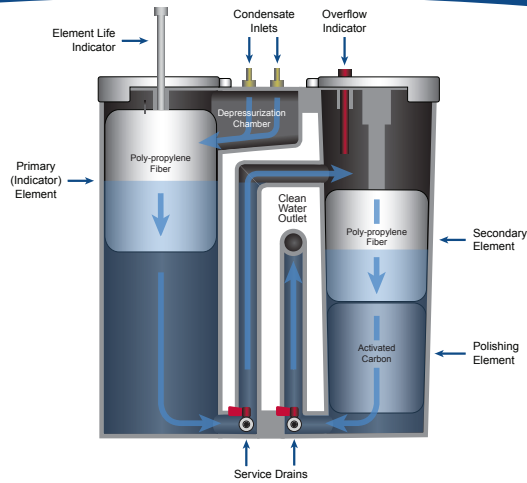
Sample bottle included



Polypropylene elements

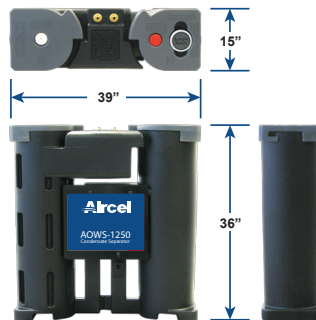


Carbon polishing element



Maximum Compressor Capacity		1250 scfm
Maximum Oil Adsorption Capacity		6.6 gal
Service Drains		2
Inlet Connections	Quantity	2
	Size	1/2 in
	Material	Brass
Outlet Connections	Type	Threaded (NPT) or Hose
	Quantity	1
	Size	1 in
Outlet Connections	Material	Brass
	Type	Threaded (NPT) or Hose
Weight		107 lbs
Housing Material		Polyethylene

* Contact us for larger, 24/7, or specialized applications, or for sizing assistance when using PAG lubricants.



Perfect for installations with:

- High air or condensate flows
- Any type of oil* or drain
- Emulsified mixtures
- Portable applications
- Floor space restrictions
- Operating cost concerns

Information provided herewith is believed to be accurate and reliable. However, no responsibility is assumed for its use or for any infringement of patents or rights of others, which may result from its use. In addition, the manufacture reserves the right to revise information without notice and without incurring any obligation.